



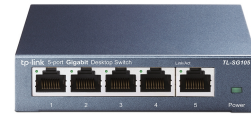
TP-Link TL-SG105 Netzwerk-Switch Unmanaged L2 Gigabit Ethernet (10/100/1000) Schwarz

Marke : TP-Link

Artikel-Code: TL-SG105

Produktname : TL-SG105

TP-Link TL-SG105. Switch-Typ: Unmanaged, Switch-Ebene: L2. Basic Switching RJ-45 Ethernet Ports-Typ: Gigabit Ethernet (10/100/1000), Anzahl der basisschaltenden RJ-45 Ethernet Ports: 5. Vollduplex. MAC-Adressentabelle: 2048 Eintragungen, Routing-/Switching-Kapazität: 10 Gbit/s. Netzstandard: IEEE 802.1p, IEEE 802.3, IEEE 802.3ab, IEEE 802.3u, IEEE 802.3x. Netzstecker: DC-Anschluss. Wandmontage



Management-Funktionen		Sicherheit	
Switch-Typ *	Unmanaged	IGMP-Snooping	✓
Switch-Ebene	L2	Multicast-Funktionen	
Quality of Service (QoS) Support	✓	Multicast Unterstützung	✓
Anschlüsse und Schnittstellen		Design	
Anzahl der basisschaltenden RJ-45 Ethernet Ports *	5	Rack-Einbau *	✗
Basic Switching RJ-45 Ethernet Ports-Typ *	Gigabit Ethernet (10/100/1000)	Produktfarbe	Schwarz
Anzahl Gigabit Ethernet (Kupfer) Anschlüsse	5	Gehäusematerial	Stahl
Netzstecker	DC-Anschluss	LED-Anzeigen	✓
Netzwerk		Wandmontage	✓
Netzstandard *	IEEE 802.1p, IEEE 802.3, IEEE 802.3ab, IEEE 802.3u, IEEE 802.3x	Zertifizierung	CE, FCC, RoHS
10G-Unterstützung *	✗	Energie	
Kupfer Ethernet Verkabelungstechnologie	10BASE-T, 100BASE-TX, 1000BASE-T	Netzteil enthalten *	✓
unterstützte Kabeltypen	Cat3, Cat4, Cat5, Cat5e	AC Eingangsspannung	220 V
Vollduplex	✓	AC Eingangsfrequenz	50 Hz
Unterstützung Datenflusssteuerung	✓	Eingangsstrom	0.6 A
Auto MDI/MDI-X	✓	Stromverbrauch (max.)	2,3 W
Auto-Negotiation-Funktion	✓	Power over Ethernet (PoE)	
Selbstlernen von MAC-Adressen unterstützt	✓	Power over Ethernet (PoE) *	✗
Auto-Alterung von MAC-Adressen unterstützt	✓	Betriebsbedingungen	
Datenübertragung		Betriebstemperatur	0 - 40 °C
Routing-/Switching-Kapazität *	10 Gbit/s	Temperaturbereich bei Lagerung	-40 - 70 °C
Transferrate	7,4 Mpps	Relative Luftfeuchtigkeit in Betrieb	10 - 90%
MAC-Adressentabelle *	2048 Eintragungen	Luftfeuchtigkeit bei Lagerung	5 - 90%
Store-and-Forward	✓	Wärmeableitung	7,83 BTU/h
Jumbo Frames Unterstützung	✓	Gewicht und Abmessungen	
Jumbo-Frames	16000	Breite	100 mm
		Tiefe	98 mm
		Höhe	25 mm

Datenübertragung		Verpackungsdaten	
Datenpaket-Pufferspeicher	1 MB	Mitgelieferte Kabel	AC
		Benutzerhandbuch	✓
		Verpackungsart	Box
Logistikdaten			
		Warentarifnummer (HS)	85176990



0172304263228



172304263228

Disclaimer. The information published here (the "Information") is based on sources that can be considered reliable, typically the manufacturer, but this Information is provided "AS IS" and without guarantee of correctness or completeness. The Information is only indicative and can be changed at any time without notification. No rights can be based on the Information. Suppliers or aggregators of this Information do not accept any liability with regard to the content of (web)pages and other documents, including its Information. The publisher of the Information can not be held liable for the content of 3rd party websites that are linking this Information or are linked to from this Information. You as the User of the Information are solely responsible for the choice and usage of this Information. You are not entitled to transfer, copy or otherwise multiply or distribute the Information. You are obliged to follow the directions of the copyright owner(s) with regard to the use of the Information. Exclusively Dutch law is applicable. With regard to price and stock data on the site, the publisher followed a number of starting points, which are not necessarily relevant for your private or business circumstances. Therefore, the price and stock data are only indicative and are subject to changes. You are personally responsible for the way you use and apply this information. As a user of the Information or sites or documents in which this Information is included, you will adhere to standard fair use including avoidance of spamming, ripping, intellectual-property violations, privacy violations, and any other illegal activity.