

# Unshielded Patch Panel Installing Instruction

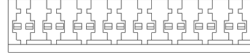
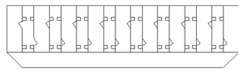
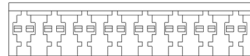
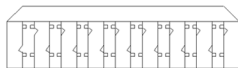
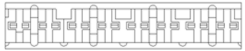
1



180°Angle Type(12、16、24、32、48、72、96 Port)

2

## IDC(3 Options)



110 D Type

Krone Type

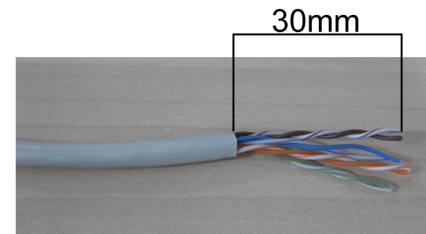
110 D&Krone IDC  
Compatible

## Color Coding Information



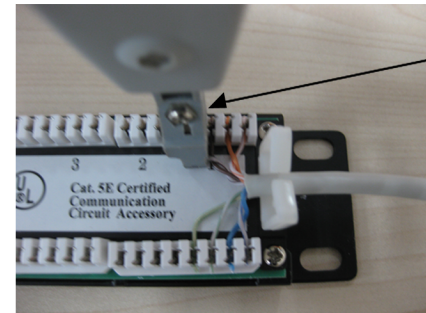
| T568A |              | T568B |              |
|-------|--------------|-------|--------------|
| Pin 5 | White/Blue   | Pin 5 | White/Blue   |
| Pin 4 | Blue         | Pin 4 | Blue         |
| Pin 1 | White/Green  | Pin 1 | White/Orange |
| Pin 2 | Green        | Pin 2 | Orange       |
| Pin 3 | White/Orange | Pin 3 | White/Green  |
| Pin 6 | Orange       | Pin 6 | Green        |
| Pin 7 | White/Brown  | Pin 7 | White/Brown  |
| Pin 8 | Brown        | Pin 8 | Brown        |

3



Strip approximately 30mm of the cable jacket, and separate to 4 pair each.

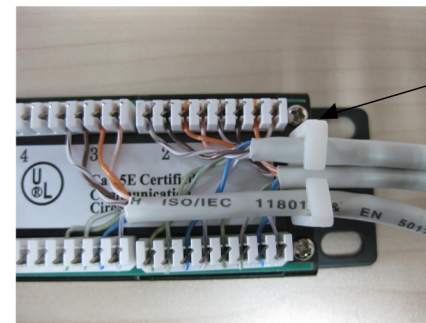
4



Cut Outside

Follow the direction on the colour-coding sticker for T568A or T568B wiring. Use the impact tool to crimp and connect the wires.

5



Cable Holder

Use the Cable-Holder to manage these cables, then complete the installation.