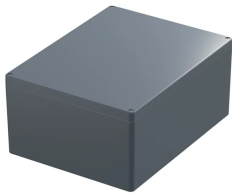


## 26880-013 IP-PRO ALUMINUM CASE, EMC, 180H 402W 310D, IP65



### KEY FEATURES

Aluminum die-cast enclosure available in 15 different sizes, with outdoor powder coating in the color silver gray (RAL 7001)

Depending on size, protection class up to IP67 according to EN 60529

EMC-shielded

Shock and vibration resistant according to EN 61373 Cat. 2 and AREMA Class I

IK 09 protection from external mechanical impacts according to IEC 62262

Temperature range of the enclosure  $-40$  to  $+90^{\circ}\text{C}$

### PRODUCT ATTRIBUTES

Product Family: IP-PRO ALU EMC

Type: Rugged

Height: 180 mm

Width: 402 mm

Depth: 310 mm

Material: Aluminum

Color: Silver Grey

Color Code: RAL 7001

Finish: Powder Coated

Protection Rating: IP65

Shape: Rectangular

## ADDITIONAL PRODUCT DETAILS

---

IP-Pro Alu EMC - The enclosure for reliable protection from water, dust and electromagnetic interferences for sensitive electronics in harsh environments. Proven and certified for applications with high shock and vibration requirements.

For mechanical modifications, innovative PCB and cable fixing solutions, as well as cooling concepts, please contact us.

### North America

All locations  
+1.763.422.2661  
Chat with us:  
[schroff.nvent.com](https://schroff.nvent.com)

### Europe

Straubenhardt, Germany  
+49.7082.794.0  
Betschdorf, France  
+33.3.88.90.64.90  
Warsaw, Poland  
+48.22.209.98.35  
Assago, Italy  
+39.02.932.7141  
Chat with us:  
[schroff.nvent.com](https://schroff.nvent.com)

### Asia

Shanghai, China  
+86.21.2412.6943  
Qingdao, China  
+86.532.8771.6101  
Singapore  
+65.6768.5800  
Shin-Yokohama, Japan  
+81.45.476.0271  
Chat with us:  
[schroff.nvent.com](https://schroff.nvent.com)

### Middle East & India

Dubai, United Arab Emirates  
+971.4.378.1700  
Bangalore, India  
+91.80.6715.2001  
Istanbul, Turkey  
+90.216.250.7374  
Chat with us:  
[schroff.nvent.com](https://schroff.nvent.com)



Our powerful portfolio of brands:  
[nVent.com](https://nvent.com) **CADDY ERICO HOFFMAN RAYCHEM SCHROFF TRACER**

© 2024 nVent. All nVent marks and logos are owned or licensed by nVent Services GmbH or its affiliates. All other trademarks are the property of their respective owners.

nVent reserves the right to change specifications without notice.