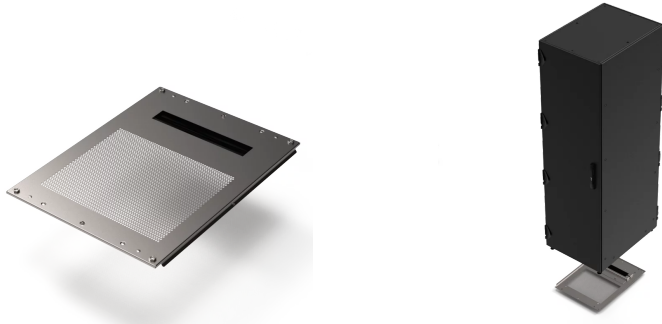




SCHROFF

21630-827 VARISTAR CP EMC BASE PLATE WITH CABLE ENTRY, PERFORATED, 600W 800D



KEY FEATURES

Installation from outside

Cutout at rear

60 mm deep

Cable ducting with IP 55 / EMC gasket

PRODUCT ATTRIBUTES

Product Type: Cabinet/Rack Base

Product Family: Varistar CP

Material: Steel

Finish: Hot-Dip Galvanized

Width: 600 mm

Depth: 800 mm

ADDITIONAL PRODUCT DETAILS

Varistar CP Base Plate for Rear Cable Ducting, plain for IP 55 or EMC applications.

Varistar CP Base Plate for Rear Cable Ducting, plain for IP 55 or EMC applications.

Please purchase the grounding kit separately.

North America

All locations

+1.763.422.2661

Chat with us:

schroff.nvent.com

Europe

Straubenhardt, Germany

+49.7082.794.0

Betschdorf, France

+33.3.88.90.64.90

Warsaw, Poland

+48.22.209.98.35

Assago, Italy

+39.02.932.7141

Chat with us:

schroff.nvent.com

Asia

Shanghai, China

+86.21.2412.6943

Qingdao, China

+86.532.8771.6101

Singapore

+65.6768.5800

Shin-Yokohama, Japan

+81.45.476.0271

Chat with us:

schroff.nvent.com

Middle East & India

Dubai, United Arab Emirates

+971.4.378.1700

Bangalore, India

+91.80.6715.2001

Istanbul, Turkey

+90.216.250.7374

Chat with us:

schroff.nvent.com



Our powerful portfolio of brands:
nVent.com **CADDY ERICO HOFFMAN RAYCHEM SCHROFF TRACER**

© 2024 nVent. All nVent marks and logos are owned or licensed by nVent Services GmbH or its affiliates. All other trademarks are the property of their respective owners.

nVent reserves the right to change specifications without notice.