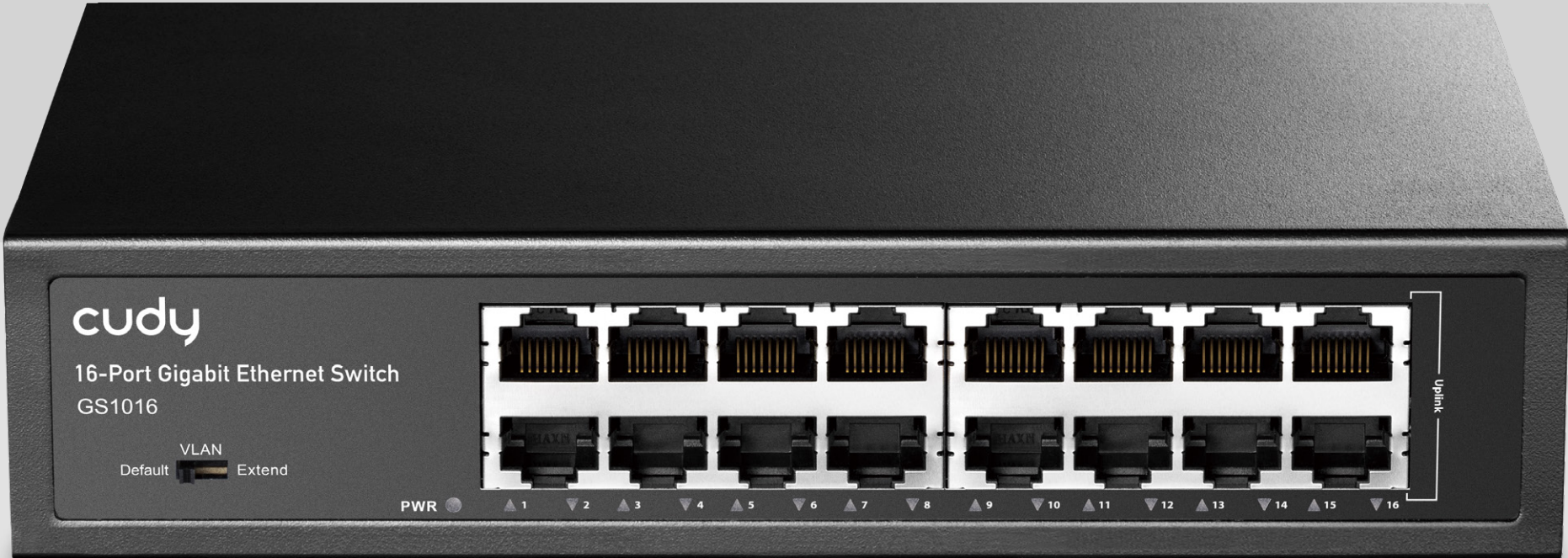




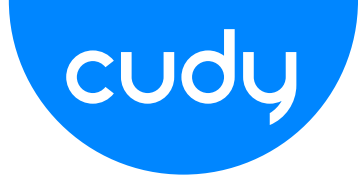
Model

# GS1016

## 16-Port Gigabit Ethernet Switch



Datasheet



# Highlights

A 16-GbE switch with VLAN/Extend functions and a fanless cooling system.

- EN8853D, EN8808Q
- 16× GbE
- Fanless Cooling
- Default/VLAN/Extend DIP Switch

# Specifications

Protocols	802.3 Protocols	802.3x Flow Control	
		802.3az Power Saving	
		802.3i 10 Mbps over Twisted Pair	
		802.3u 100 Mbps over Twisted Pair	
		802.3ab 1 Gbps over Twisted Pair	
CPU	Chipset	EN8853D, EN8808Q	
Interfaces	Physical Buttons	VLAN/Default/Extend DIP Switch	
	Gigabit RJ45 Ports	16	
	Extend Mode Ports	#1~#14	
	LED	Power	Link/ACT of Each Ethernet Ports
		Power Input	AC Inlet

Performance	MAC Address Table	8K
	Max Switching Capacity	32 Gbps
	Max Forwarding Rate	23.808 Mpps
	Jumbo Frame	15 KB
	Packet Buffer	4 Mbit
Power	Software Power Saving	0
	Power Methods	AC
	AC	90~260V 50/60Hz
Reliability	Environment	Operating Temperature: 0 °C ~ 40 °C (32 °F ~ 104 °F)
		Storage Temperature: -40 °C ~ 70 °C (-40 °F ~ 158 °F)
		Operating Humidity: 10% ~ 90% non-condensing
		Storage Humidity: 5% ~ 90% non-condensing
Package	Main Product	
Content	Power Cord	
	Installation Guide	
	Mounting Kit	
Mechanical	Installation	Desktop
		Rack-Mounting
	Dimension	200×118×44 mm
		7.87×4.65×1.73 inches
	Product Weight	617 g (21.76 oz.)
Ordering Information	Retail Package Weight	1108 g (21.76 oz.)