



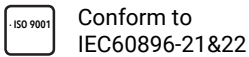
SBL18-12i (12V18Ah)



Applications

- Uninterruptable Power Supply (UPS)
- Electric Power System (EPS)
- Emergency backup power supply
- Emergency light
- Railway signal
- Alarm and security system
- Communication power supply
- DC power supply

Certificates



Specifications

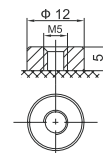
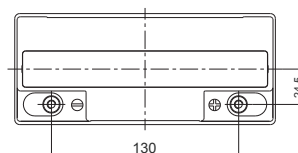
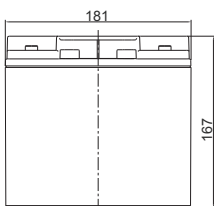
Nominal Voltage	12V	Nominal Oper. Temp. R.	20±2°C
Nominal Capacity	18Ah (C ₂₀ , 10.5V)	Operating Temp. Range	Discharge: -15~50°C Charge: -20~40°C Storage: -15~40°C
Approx. Weight	5kg	Standby Use	No limit on Initial Charging Current. Voltage 2.295 V/cell at 20° C. Temperature Coefficient -20mV/°C.
Terminal	M5	Capacity affected by Temp.	40°C 103% 25°C 100% 0°C 86%
Container Material	ABS UL94 HB	Self Discharge	SSB batteries may be stored for up to 6 months at 20°C and then a freshening charge is required. For higher temperatures the time interval will be shorter.
Rated Capacity (20°C)	18.0Ah/0.90A, 20hr, 10.5V 17Ah/1.70A, 10hr, 10.5V 16.72Ah/2.09A, 8hr, 10.5V 15.7Ah/3.14A, 5hr, 10.5V 13.92Ah/4.64A, 3hr, 10.5V 11.0Ah/11.0A, 1hr, 9.6V	Life Expectancy	10-12 years according to EUROBAT
Max. Discharge Current	180A (5s)		
Internal Resistance / Impedance (1kHz)	Approx. 18mΩ		



Dimensions

■ M5 Terminal

Unit: mm | Dimensions: 181 Length X 77 Width X 167 Height (167 Height incl. Terminal)



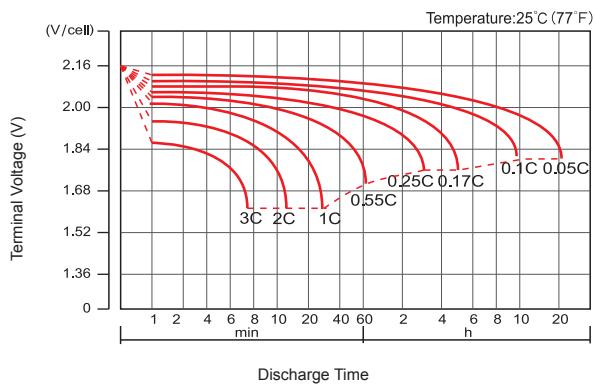
Constant Current Discharge (Amperes) at 20°C

F.V/Time	5min	10min	15min	30min	1h	2h	3h	4h	5h	8h	10h	20h
1.60V	68.29	48.27	34.89	20.04	11.00	6.752	5.076	4.098	3.395	2.185	1.775	0.937
1.65V	63.51	45.61	33.36	19.24	10.62	6.537	4.919	3.987	3.307	2.161	1.753	0.922
1.70V	57.30	41.99	31.24	18.39	10.27	6.321	4.786	3.879	3.221	2.127	1.727	0.911
1.75V	51.34	38.43	29.07	17.58	9.899	6.101	4.643	3.779	3.140	2.098	1.704	0.900
1.80V	45.08	34.79	26.85	16.80	9.521	5.882	4.499	3.671	3.059	2.062	1.682	0.891
1.85V	35.78	28.43	22.28	14.47	8.539	5.390	4.159	3.412	2.853	1.936	1.584	0.846

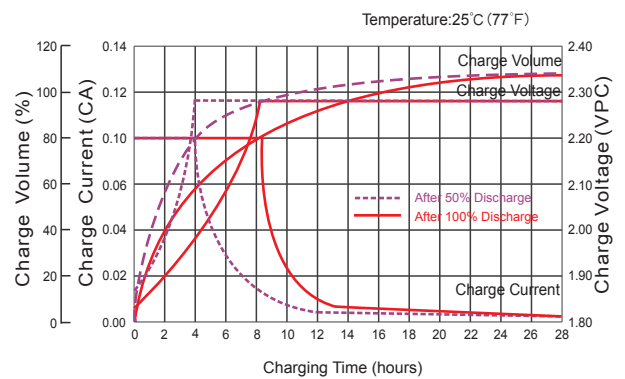
Constant Power Discharge (Watts/cell) at 20°C

F.V/Time	5min	10min	15min	30min	1h	2h	3h	4h	5h	8h	10h	20h
1.60V	113.2	82.04	61.00	36.40	20.67	12.80	9.695	7.868	6.545	4.268	3.489	1.845
1.65V	106.5	79.02	59.18	35.31	20.07	12.45	9.435	7.683	6.399	4.229	3.451	1.819
1.70V	98.27	74.08	56.26	34.09	19.54	12.11	9.220	7.503	6.254	4.173	3.404	1.799
1.75V	90.00	69.04	53.11	32.92	18.94	11.74	8.983	7.338	6.118	4.123	3.363	1.779
1.80V	80.71	63.58	49.73	31.78	18.32	11.37	8.739	7.153	5.981	4.062	3.324	1.764
1.85V	65.41	52.89	41.86	27.64	16.53	10.48	8.115	6.674	5.596	3.823	3.134	1.677

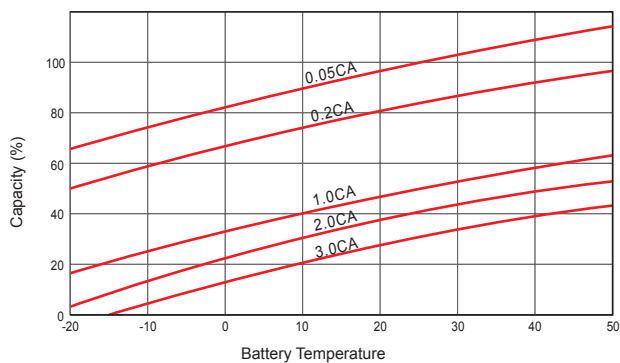
Discharge Characteristics



Float Charging Characteristics



Temperature Effects in Relation to Battery Capacity



Effect of Temperature on Long Term Float Life

